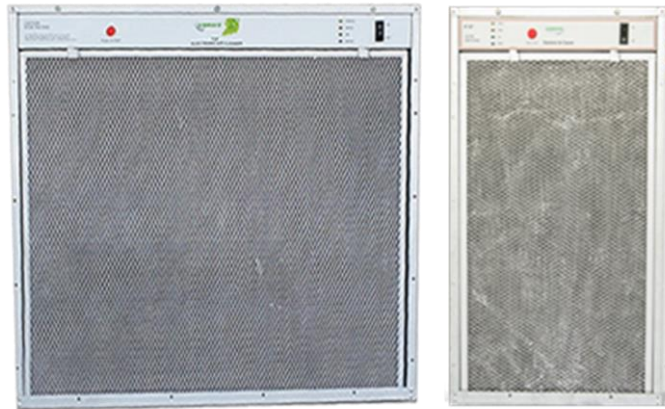




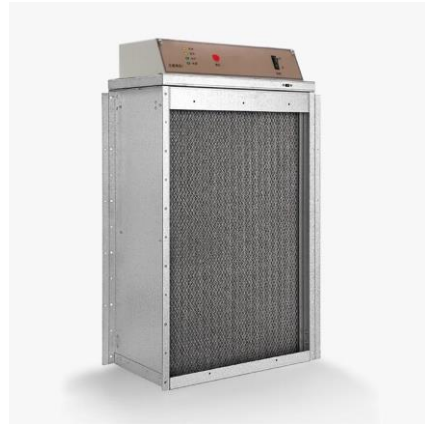
F2F & F1F Electronic Air Filter Array (Front Loading of Cells)



SPECIFICATION / MODEL	F2F	F1F
Air Volume (CMH)	3420m ³ /h	1740m ³ /h
Dimension	677 x 609 x 166	349 x 609 x 166
Power Supply	220V/240V, 50Hz	
Power Consumption	38 Watts	23 Watts
Current Draw	0.2A	0.2A
Ionizer / Collector Voltage	8.2/4.1 KV	8.2/4.1 KV
HV Current	2 mA Max	2 mA Max
Weight	15 Kg	12 Kg
Filtration Efficiency	95% at 1 M/s	95% at 1 M/s
	85% at 2 M/s	85% at 2 M/s
Pressure Drop	0.04 inch w.c at 1M/s	0.04 inch w.c at 1M/s
	0.10 inch w.c at 2 M/s	0.10 inch w.c at 2 M/s
Electronic Cell	2 Pieces	1 Piece
Pre-Filter	1 Large Piece	1 Small Piece
Charcoal Filter	2 Pieces	1 Piece



F2T & F1T Electronic Air Filter Array (Top / Side Loading of Cells)



SPECIFICATION / MODEL	F2T	F1T
Air Volume (CMH)	3420m ³ /h	1740m ³ /h
Dimension	614 x 688 x 200	614 x 361 x 200
Power Supply	220V/240V, 50Hz	
Power Consumption	38 Watts	23 Watts
Current Draw	0.2A	0.2A
Ionizer / Collector Voltage	8.2/4.1 KV	8.2/4.1 KV
HV Current	2 mA Max	2 mA Max
Weight	18 Kg	10 Kg
Filtration Efficiency	95% at 1 M/s	95% at 1 M/s
	85% at 2 M/s	85% at 2 M/s
Pressure Drop	0.04 inch w.c at 1M/s	0.04 inch w.c at 1M/s
	0.10 inch w.c at 2 M/s	0.10 inch w.c at 2 M/s
Electronic Cell	2 Pieces	1 Piece
Pre-Filter	1 Large Piece	1 Small Piece
Charcoal Filter	2 Pieces	1 Piece